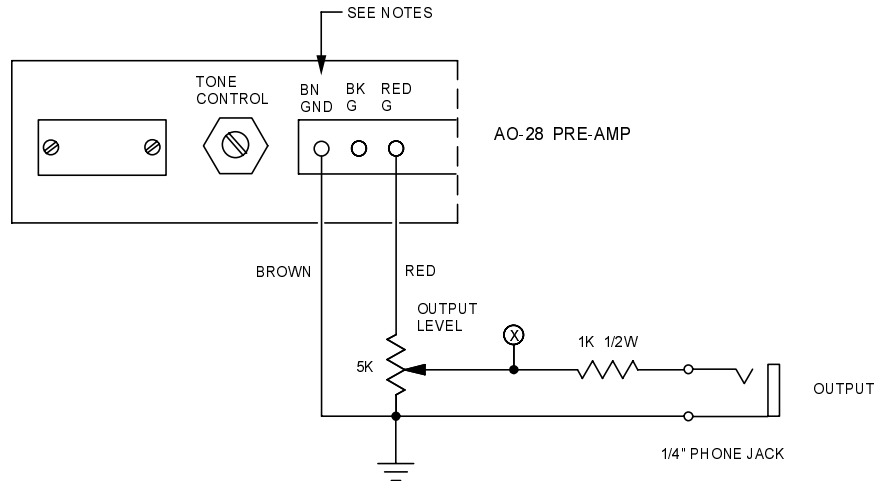


How can I hookup my B-3, C-3, etc. up to an amplifier other than a Leslie speaker or Hammond tone cabinet?

The following circuit provides an unbalanced output with adjustable level from any later Hammond "Standard tonewheel console". However, keep in mind that most commercial and musical instrument amplifiers are not designed for organ use and will not provide the same sound quality as a Leslie or Hammond tone cabinet. There are of course circumstances where connecting an external amplifier is none the less still desirable. These include temporary installations, rental instruments, and adding a bass amp to give the organ more power at the low end. Starting with a good quality amp and carefully adjusting the equalization / tone controls will help provide the best results.

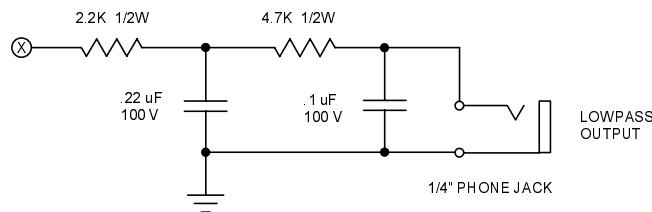


NOTES:

- Install the circuit in a suitable aluminum or steel enclosure. Component layout and tolerances are not critical.
- Early AO-28 pre-amps (those without pilot light connections) have a lug in the BN / GND location which is not identified and has no internal pre-amp connection. When adding the output circuit to pre-amps of this vintage, use a convenient chassis ground for the brown ground connection.
- When used simultaneously with early Leslies in the 122 family, some amplifiers may exhibit a higher than normal hum level. If the hum through the external amplifier is eliminated by unplugging the Leslie, have a qualified technician remove the line bypass capacitors from the Leslie 122 amplifier. These capacitors are not present in later 122 amplifiers.

Is there an easy way output only bass frequencies so I can use a bass amp in addition to my Leslie to reinforce the low end?

The following low pass filter circuit can be added to the output circuit above and will attenuate the mid and high frequencies.



Is it possible to connect a Hammond L-100 spinet organ to a guitar amplifier?

The same circuits shown above will also work with most single channel Hammond spinets by connecting to the speaker terminals instead of the pre-amp output. Connect the brown ground wire of the circuit to the black speaker wire and the red wire of the circuit to the green speaker wire. The speaker(s) must remain connected to the organ amplifier unless a suitable load resistor is connected in its place.